



15 Baza Place Banksia Beach QLD

3 3 2

Positioned perfectly on the water's edge with a brilliant Northern aspect, this waterfront home feels brand new and offers a wonderful opportunity to immerse yourself in the true Bribie Island Lifestyle.

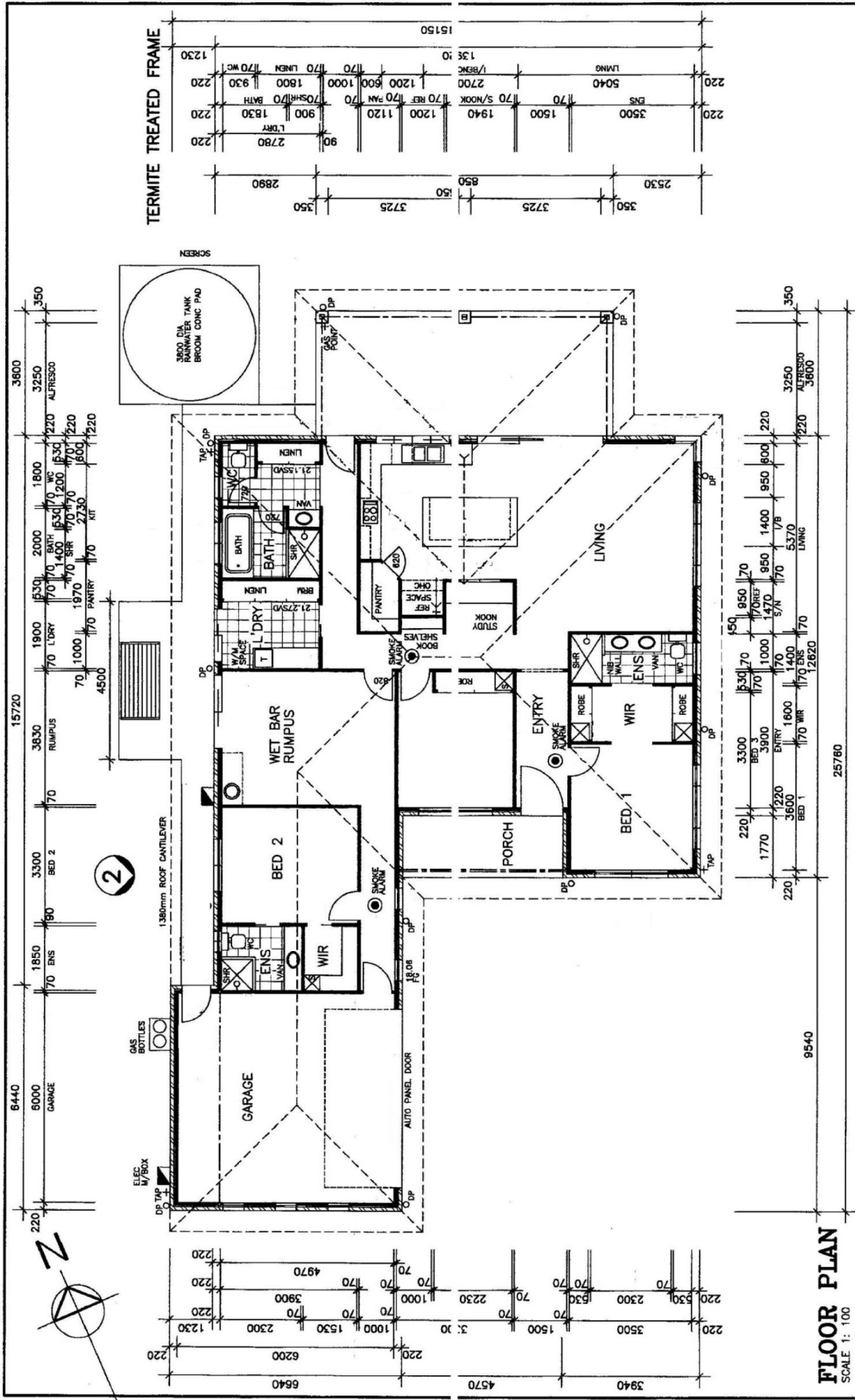
Set on a great size 840m2 block and enjoying a full 20metres of main flow water frontage, you can't help but enjoy living here!

- Side access to fit motorhome or caravan
- Fully zone ducted air conditioning
- 6 kw solar system keeping power bills down
- 3 great sized bedrooms plus study nook.
- Caesar stone benchtops & quality appliances.
- Hard floors throughout for easy clean.
- Separate rumpus room or teenage/parent/office retreat.
- 20,000 litre water tank & pump.

Price : \$ 785,000
Building Size : 322 sqm
Land Size : 840 sqm
View : <https://www.kdnorth.com.au/sale/qld/red-cliffe-bribie-caboulture/banksia-beach/residential/house/5671041>



Mark Van Derzeil
07 3410 7721



PROJECT	PROPOSED RESIDENCE
LOCATION	LOT 678 BAZA PLACE, BANKSIA BEACH.
DATE	14/11/14
JOB NO.	
CHECKED	
SCALE	AS SHOWN
SHEET No.	2 OF 8

AMENDMENTS	DATE	DESCRIPTION
A	14/11/14	WORKING DRAWING

NOTE:

- ALL CONSTRUCTION TO BE IN ACCORDANCE WITH BUILDING CODE OF AUSTRALIA AND A.S. 1684.2 - 1988 TIMBER FRAMING MANUAL.
- WINDOW CODES DENOTE HEIGHT x WIDTH e.g. 1218 - 1200 HIGH x 1800 WIDE.
- DIMENSIONS TO BE VERIFIED BY CONTRACTORS PRIOR TO PREPARATION OF SHOP DRAWINGS OR MANUFACTURING. DIMENSIONS TAKE PREFERENCE OVER SCALE.

MANCORP
QUALITY HOMES

PO Box 1305
Cobawaine Qld 4510
Office (07) 54822011
Fax: (07) 54822877
AGN: 065 955 178
© 2014 MANCORP



FLOOR PLAN
SCALE 1: 100