

23 The Promontory Banksia Beach QLD

5 🏠 4 🚗 3 🚗

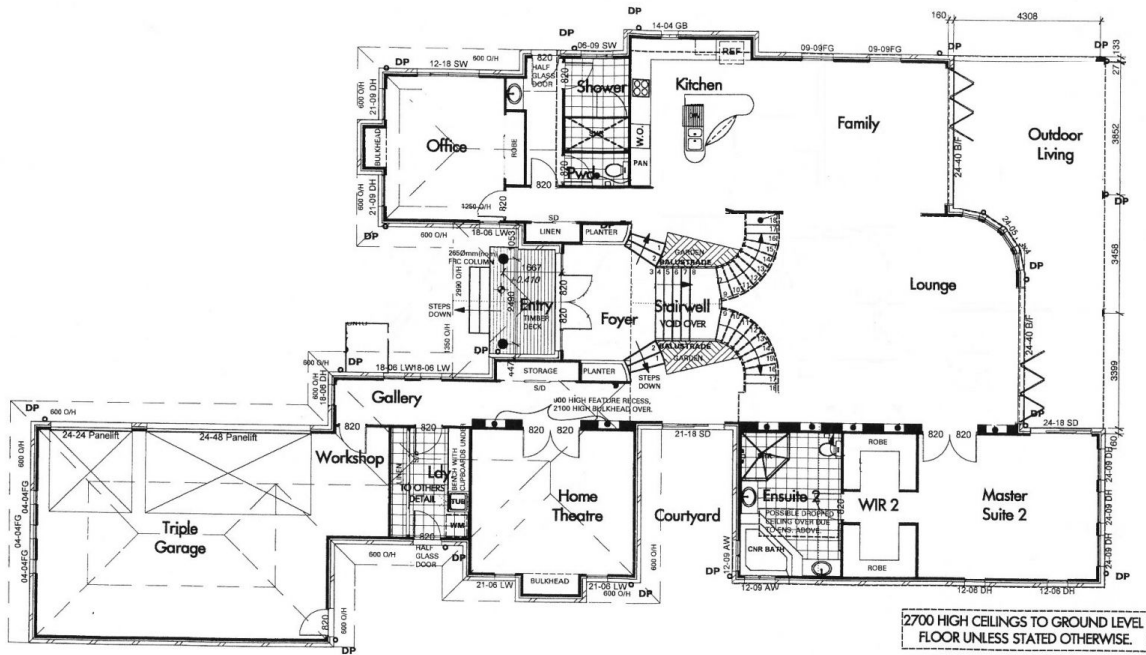
Prepare to be amazed at every turn when entering this breathtaking residence on a prime waterfront holding built to the high calibre of homes in this prestigious cul-de-sac. The gated entry offers a glimpse of an architecturally designed residence boasting more than 500m² of luxury living and a soaring entrance foyer that presents a unique welcome.

Price : \$ 1,200,000
Building Size : 515 sqm
Land Size : 1099 sqm
View : <https://www.kdnorth.com.au/sale/qld/red-cliffe-bribie-caboolture/banksia-beach/residential/house/5671100>

You will be drawn to the enormous living area with a high wall of glass taking in the waterfront views. Entertaining family and friends will be a delight with the generous sized alfresco area perfectly positioned adjacent to the 12m lap pool and taking in those sensational views this property has to offer. Internally the home has been cleverly designed with full master suites on both spacious levels to incorporate absolute finesse, class and top quality finishes. A great transition between formal and casual living is



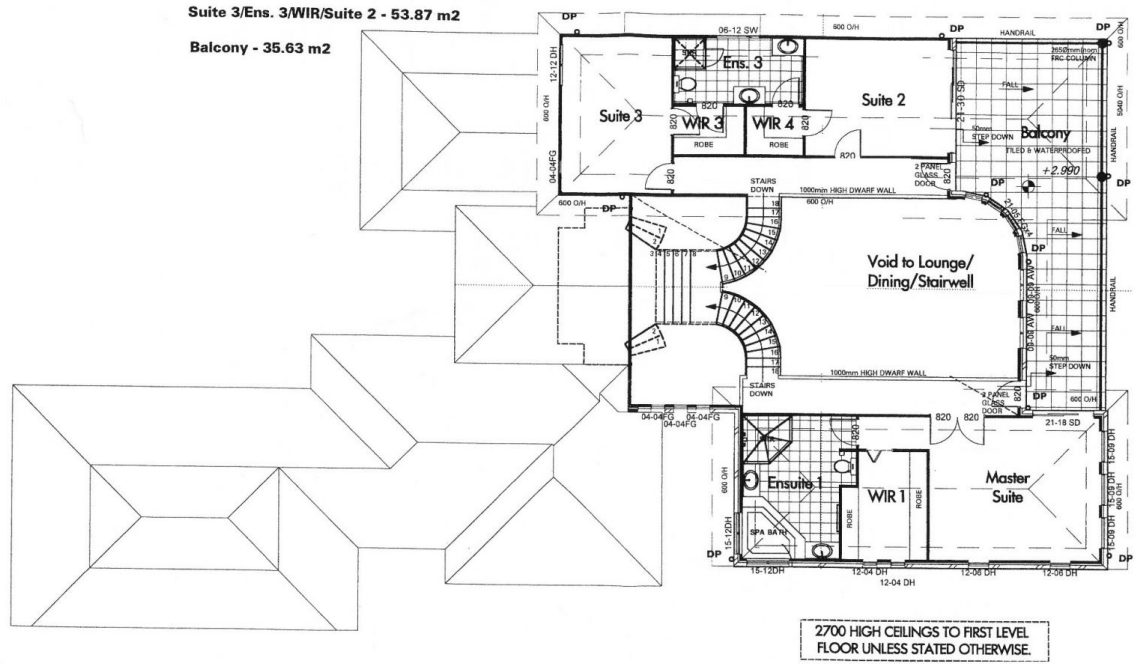
Mark Van Derzeil
07 3410 7721



Living/Garage - 323.88 m2 Outdoor Living - 35.63 m2 Entry - 8.00 m2

DO NOT SCALE DIMENSIONS/CHECK & VERIFY ALL DIMENSIONS PRIOR TO COMMENCEMENT/REMOVABLE DOOR TO W.C.

Master Suite/WIR/Ensuite/Land. - 58.36 m2
Suite 3/Ens. 3/WIR/Suite 2 - 53.87 m2
Balcony - 35.63 m2



DO NOT SCALE DIMENSIONS/CHECK & VERIFY ALL DIMENSIONS PRIOR TO COMMENCEMENT/REMOVABLE DOOR TO W.C.