



### 11 Pacific Drive Banksia Beach QLD

4 2 2

COVID- 19 restrictions in place and inspections are welcome although strict protocols for site visits are in place.

Occupying a generous 696m2 allotment, this charming, neat and tidy residence comprises four very large bedrooms including a master bedroom with a walk-in robe and ensuite, multiple living areas, a very spacious kitchen, covered entertaining area directly off the family room and double lock up garage.

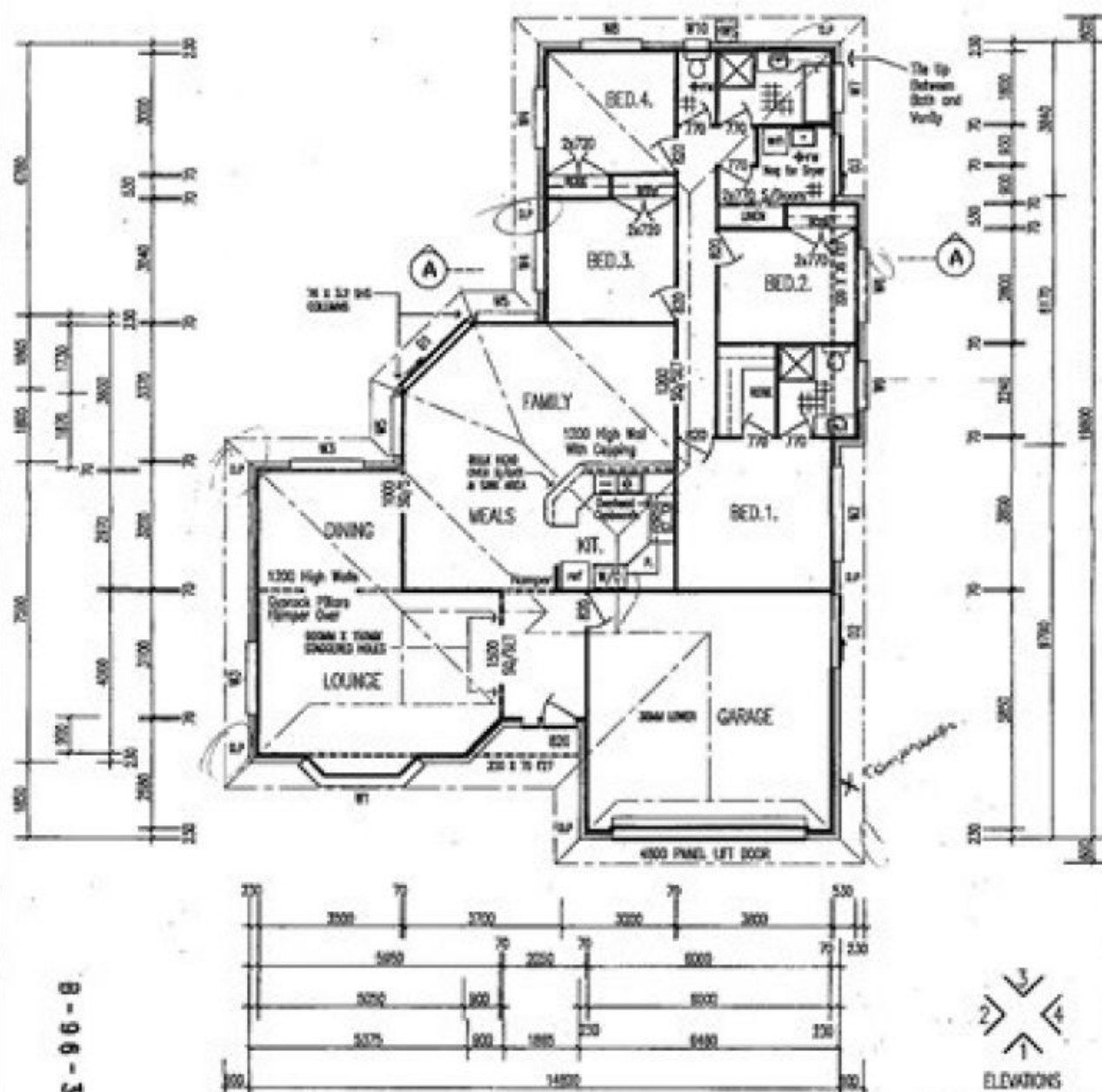
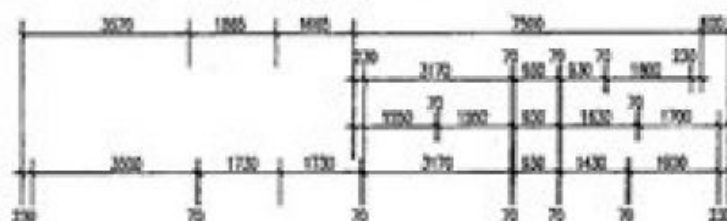
This family-oriented home offers expansive lawn space out the back and the fully fenced backyard makes this is a secure and private home for children and pets.

Close to schools, transport, shops and golf clubs this impressive home has been lovingly cared for and is truly an excellent lifestyle choice in one of the peaceful and

**Price** : \$ 485,000  
**Land Size** : 696 sqm  
**View** : <https://www.kdnorth.com.au/sale/qld/redcliff-e-bribe-caboolture/banksia-beach/residential/house/5671476>



**Peter Rootsey**  
0419 787 421



8-96-3184

216 SQ/M.

## FLOOR PLAN

© THESE DRAWINGS ARE COPYRIGHT AND ALREADY KNOWN THE PROPERTY OF THE DOWNTOWN. THEY ARE NOT TO BE REPRODUCED WHOLLY OR IN PART WITHOUT WRITTEN CONSENT OF AT DOWNTOWN AND BUILDING CONSULTING SERVICE.

FOUR DANGERS ARE PRESENT ON THIS SCALE.  
ALL DANGERS ARE TO BE WIPED OFF THE AT RISK

Date 23-10-96

Dwg. No. MART-1

Drawn by ~~the~~

Scale = 1 : 100. 2 of 5.