



**4/54 Winston Drive Bongaree QLD**

2 2 1

So close to everything, with water views to the Bribie Island bridge and the Pumicestone Passage, this ground floor unit is ideally located near shops and with public transport only a few metres away. What more to you want? Would suit both an investor with a good rental return or owner occupier.

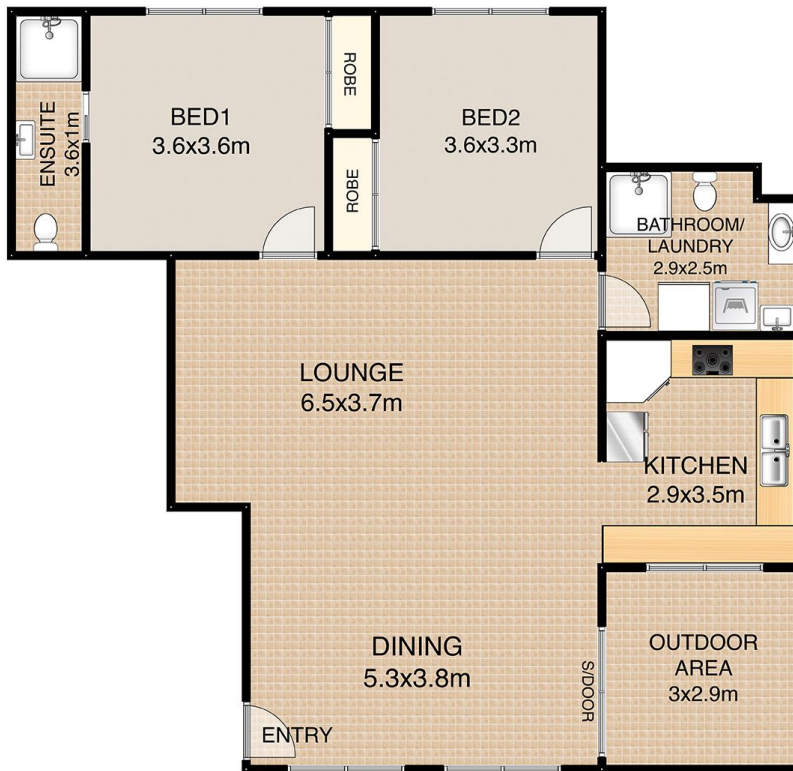
**Price** : \$ 315,000  
**Building Size** : 101 sqm  
**View** : <https://www.kdnorth.com.au/sale/qld/red-cliffe-bribie-caboulture/bongaree/residential/unit/5671512>

This unit is massive, the open plan living area allowing options for multiple layout ideas. Tiled throughout, except the master bedroom which is carpeted which also has an ensuite. The kitchen is larger than usual for a unit, with new dishwasher and new electric oven. The balcony has great views to the water, and is exclusive use. There is a single lock up garage in the basement, and a pool within the complex for residents use.

Phone now for a private appointment to view, with a



**Vanessa Hart**  
**07 3410 7721**



**FLOOR PLAN:  
4/54 WINSTON DRIVE - BONGAREE**

**APPROXIMATE FLOOR SPACE = 101m<sup>2</sup>**