



## 235 Welsby Parade Bongaree QLD

4 2 2

Positioned right on the waterfront overlooking Pumicestone Passage and the Bay. This magnificent high end apartment building will offer the discerning buyer the security and exclusivity of owning an entire full floor apartment, with only 4 apartments in total and located right on the waterfront at Bribie Island. These apartments are now for sale off the plan.

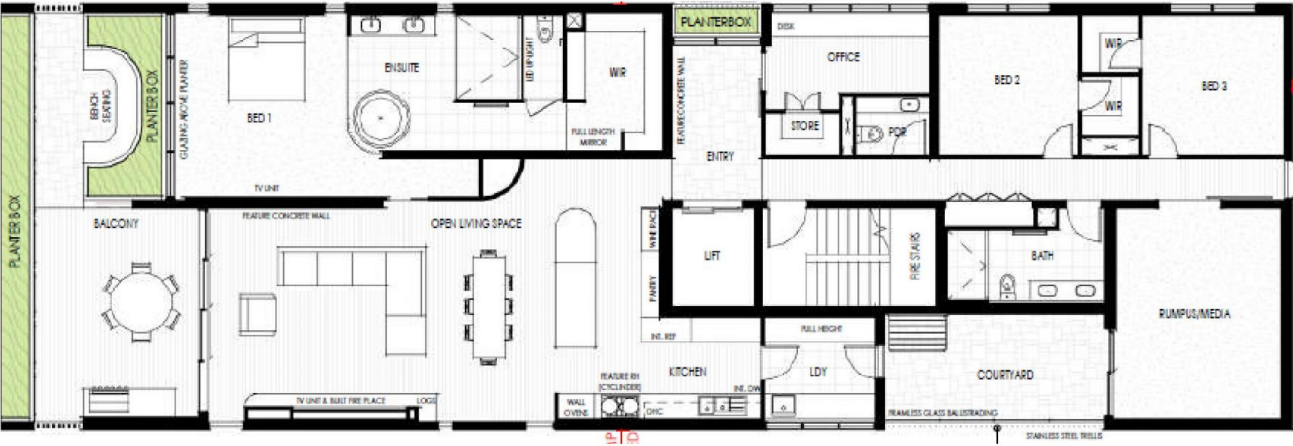
Construction due to commence mid 2024. Contact the marketing agents now.

**Price** : FROM \$2,485,000  
**Building Size** : 305 sqm  
**View** : <https://www.kdnorth.com.au/sale/qld/red-cliffe-bribie-caboolture/bongaree/residential/unit/7339099>



**Keith Wilkins**  
07 3410 7721

Proposed Floor Plan  
“The Welsby”



Note: May be subject to variation.