



2 Hibiscus Court Bongaree QLD

3 1 5

Brick and Tile house close to Pumicestone Passage and in a quiet cul de sac street. On a large 659m² corner block with two street access.

Close to a local boat ramp that is exclusively for the use of residence in this area. Walk through path to the Bellara shopping centre, Aldi, McDonalds, and Red Rooster.

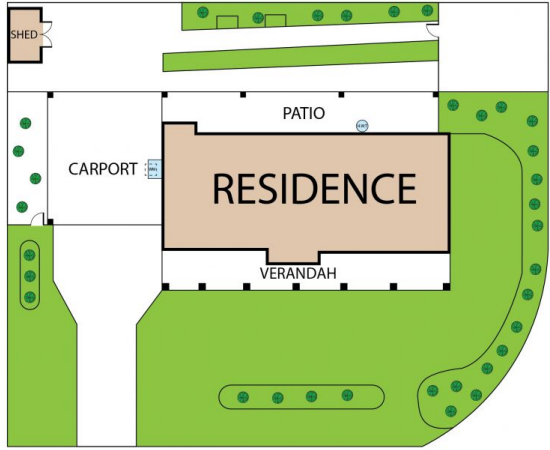
Renovated Kitchen, Dining & lounge rooms as well as bathroom. Oversized double lock up garage at 7m x 6m with electric door. Large area to the rear of house which is big enough to fit a prime mover! Bring along your caravan, boat, or utility; 21.8m in length with wide concrete tracks.

Entertainment area with pull down shade blinds to block out any sun when enjoying this area can be blocked out.

Price : \$ 730,000
Land Size : 659 sqm
View : <https://www.kdnorth.com.au/sale/qld/redcliff-e-bribie-caboolture/bongaree/residential/house/7606335>



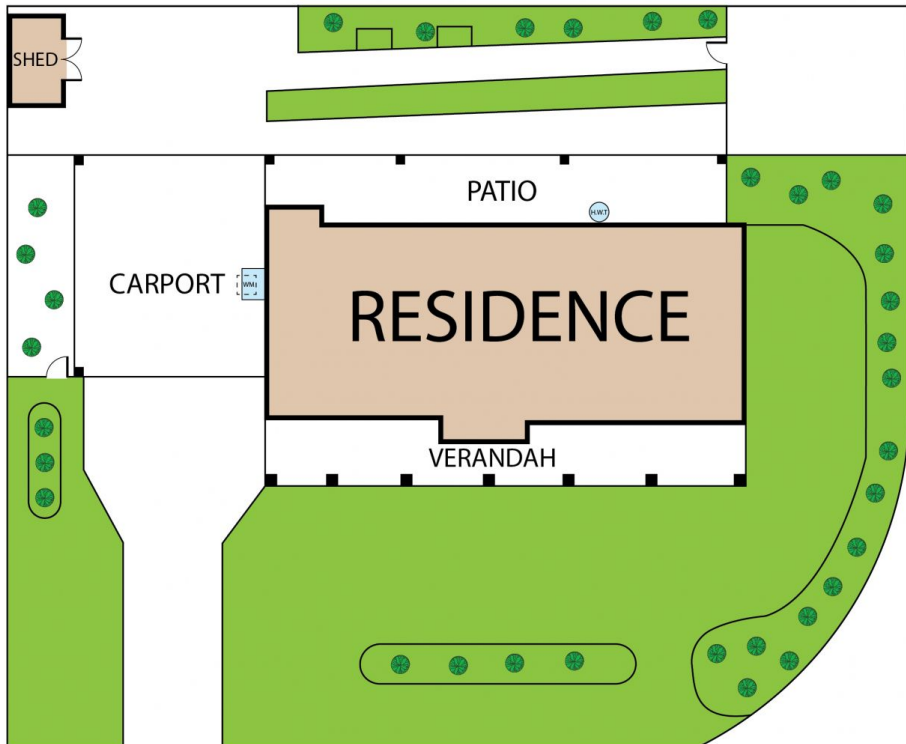
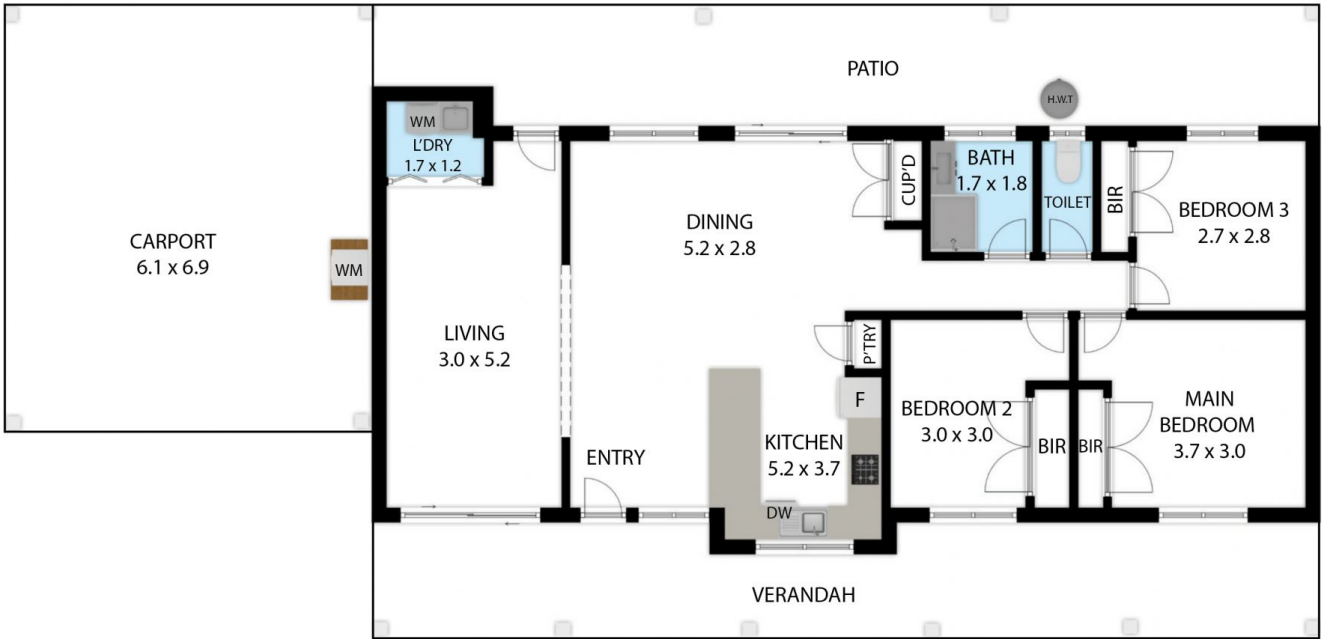
Tim Moore
07 3410 7721



2 Hibiscus Court, Bongaree 4507

TOTAL APPROX. FLOOR AREA 96 SQ.M

Whilst every attempt has been made to ensure the accuracy of the floor plan contained here, measurements of doors, windows, rooms and any other items are approximate and no responsibility is taken for any error, omission, or misstatement. This plan is for illustrative purposes only and should be used as such by any prospective purchaser.



2 Hibiscus Court, Bongaree 4507

TOTAL APPROX. FLOOR AREA 96 SQ.M

Whilst every attempt has been made to ensure the accuracy of the floor plan contained here, measurements of doors, windows, rooms and any other items are approximate and no responsibility is taken for any error, omission, or misstatement. This plan is for illustrative purposes only and should be used as such by any prospective purchaser.