



20 Tasman Court Banksia Beach QLD

4 2 2

A waterfront panorama is yours to behold from this North facing substantial lowset residence featuring 4 bedrooms plus study and positioned on a 931 m2 allotment with a 21 metre frontage to the canal.

Presented in superb condition by the original owners, this home located in a quiet cul de sac with waterfront homes on both sides of the street will truly impress upon inspection.

Features such as high vaulted ceilings in the family room looking out across the water, sunken lounge and dining room, huge master suite, internal feature walls, unique wine cellar below ground, covered outdoor entertaining area, private saltwater pool and a 10 mtr x 4 mtr dry dock pontoon starts to give you an idea of the many attributes of this quality property.

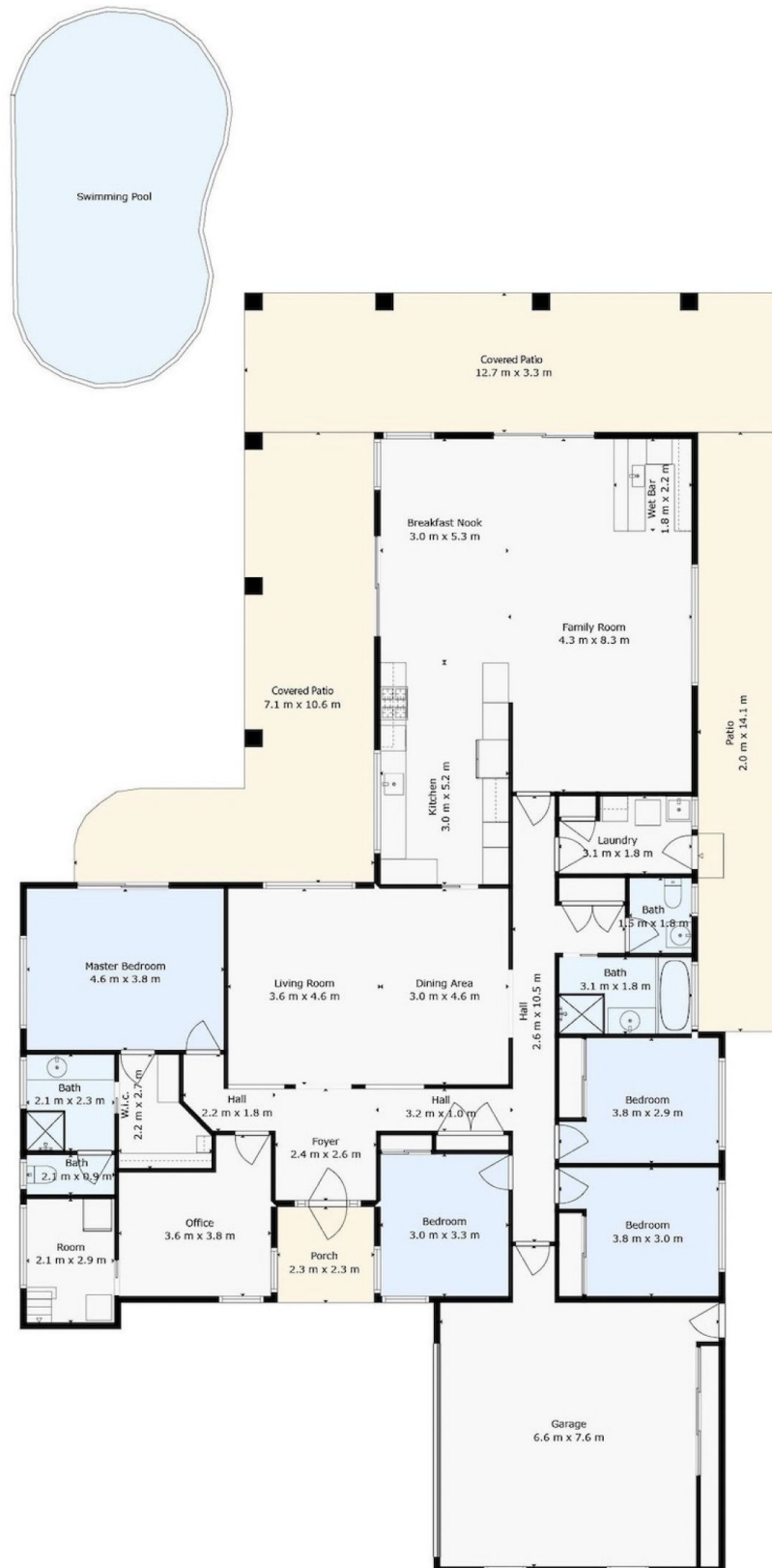
In summary we have;

*4 bedrooms & 2 bathrooms (huge master bedroom and

Price : \$1,595,000
Building Size : 294 sqm
Land Size : 931 sqm
View : <https://www.kdnorth.com.au/sale/qld/redcliffe-bribie-caboolture/banksia-beach/residential/house/7916585>



Keith Wilkins
07 3410 7721



TOTAL: 329 m2
Including Patio

Measurements Are Calculated By Cubicasa Technology. Deemed Highly Reliable But Not Guaranteed.